

# Y-PORT Business Matching Seminar in Metro Cebu

- Yokohama Partnership of Resources and Technologies  
in collaboration with MEGA CEBU -

Attached files

## Special Presenters from Development Organizations

- Asian Development Bank (ADB)
- Japan International Cooperation Agency (JICA)

## Delegation from the City of Yokohama

- Culture and Tourism Bureau
- Water Works Bureau
- Resources and Waste Recycling Bureau
- Economic Affairs Bureau
- International Affairs Bureau

## Japanese companies list (tentative as of 27th January, 2017)

	Name	Note	Website
1	Yokohama Water Co., Ltd.	Consulting firm on water supply and sewage system.	<a href="http://yokohamawater.co.jp/en/">http://yokohamawater.co.jp/en/</a>
2	NEC Philippines, Inc.	Mobile infrastructure and ICT product sales. Interested in urban traffic security (CCTV command centre).	<a href="http://www.nec.com/">http://www.nec.com/</a>
3	Showa Senjoki CO.,Ltd.	High speed drain filter and high pressure washing system manufacture firm.	<a href="http://www.showa-jet.co.jp/">http://www.showa-jet.co.jp/</a>
4	AMCON INC.	Waste treatment system developer, manufacture and sales.	<a href="http://en.amcon.co.jp/">http://en.amcon.co.jp/</a>
5	Mansei Recycle Systems Co.,Ltd.	Resource recycling firm.	<a href="http://www.yokohama-re-style.com/">http://www.yokohama-re-style.com/</a>
6	Yokohama Resources and Waste Recycling Public Corporation	Operation and maintenance of waste disposal facilities and final waste disposal site. Technical assistance for construction of waste treatment facility.	<a href="http://www.shigenkousha.or.jp/">http://www.shigenkousha.or.jp/</a>
7	JFE ENGINEERING Corporation	Construction firm. EPC Business	<a href="http://www.jfe-eng.co.jp/en/index.html">http://www.jfe-eng.co.jp/en/index.html</a>
8	Hinode Sangyo Co., Ltd.	Wastewater treatment firm specialised in its effluent treatment agents "Elbic" series, micro bubble generator "HMB" and bacteria treatment system.	<a href="http://www.hinodesangyo.com/english/">http://www.hinodesangyo.com/english/</a>
9	AGC Asia Pacific Pte Ltd	Building material firm specialised with energy-saving window, Glass Integrated Photo Voltaic Panel (GIPV) and heat protection paint.	<a href="http://www.agc-flatglass.sg/">http://www.agc-flatglass.sg/</a>
10	Nippon Koei	Engineering consulting firm	<a href="http://www.n-koei.co.jp/english/">http://www.n-koei.co.jp/english/</a>
11	Eight-Japan Engineering Consultants Inc.	Construction consulting firm	<a href="http://www.ejec.ej-hds.co.jp/en/index.html">http://www.ejec.ej-hds.co.jp/en/index.html</a>
12	Stanley Electric (Asia Pacific) Ltd.	Manufacturing firm specialised in LED lighting products	<a href="https://www.stanley.co.jp/e/company/base_ao.php">https://www.stanley.co.jp/e/company/base_ao.php</a>

## ADB scheme



### ASIA PACIFIC PROJECT PREPARATION FACILITY (Managed by the Office of Public-Private Partnership)



#### ■ What is the Asia Pacific Project Preparation Facility?

The Asia Pacific Project Preparation Facility (AP3F) is a multilateral trust fund aiming to increase infrastructure development and enhance the quality of infrastructure in Asia and the Pacific. AP3F is managed by the Office of Public-Private Partnership of the Asian Development Bank (ADB), and commenced operations in January 2016. Target sectors include energy, transport, urban development, and social infrastructure.

#### ■ AP3F provides additional resources and support for

- (i) preparation of infrastructure projects with private sector participation in ADB's developing member countries (DMCs);
- (ii) capacity-related assistance, including the reform and improvement of policy, legislative, regulatory, and institutional practices in DMCs; and
- (iii) ongoing project performance assistance, including project monitoring and project restructuring.

#### ■ Benefits of AP3F for

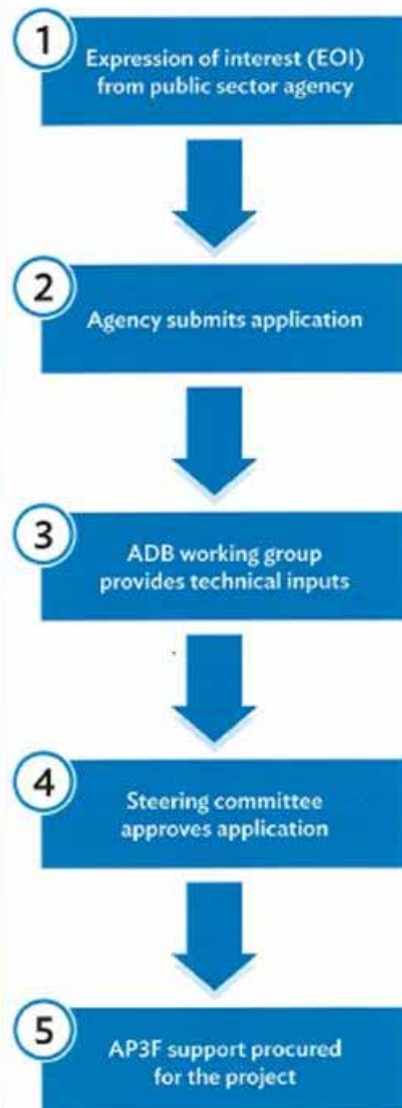
##### Public Sector

- Accelerated project preparation and development
- Improved project viability and bankability
- Enhanced capacity and more conducive environment for private sector participation
- Better response to projects under operation

##### Private Sector

- Consultants/advisors: greater opportunities for their work with public sector clients
- Concessionaires: governments will have more capacity to consider their project proposals

#### Application Process





## ■ Mission and Key Responsibilities

The Office of Public-Private Partnership (OPPP) was established in September 2014 to enhance the role of the Asian Development Bank (ADB) in supporting and enabling governments of its developing members to secure greater private investment and generate economic growth in the region. OPPP provides transaction advisory services to clients in order to deliver bankable PPP projects, coordinates and supports PPP-related activities in ADB, and manages a bank-wide project preparation facility.

With a dedicated team of transaction advisors with vast infrastructure finance experience in assisting clients across a wide range of sectors, ADB possesses a unique ability to provide advice on project conceptualization, structuring, marketing, and negotiation while firmly rooting transactions on public policy imperatives.

## ■ What is TAS?

Transaction advisory services (TAS) are fee-based advisory services provided by ADB over the entire range of activities associated with the development and implementation of PPP projects. ADB's TAS services are ideally suited for

- pathfinder, difficult, or "first-of-its-kind" transactions;
- transactions that involve significant policy or regulatory changes, or are complex from a financial, legal, or risk perspective;
- transactions that may benefit from ADB's brand, and are associated with transparency, fairness, and governance; and
- transactions that may benefit from ADB's role as a development bank that can mobilize financing from multiple public and private financial institutions.



## Key Objectives

### Expanding Private Sector Development

ADB's assistance to private sector development makes use of sovereign lending, private sector financing, technical assistance, and transaction advisory services to enable private sector participation in infrastructure.

### Strengthening ADB's role as project developer

ADB seeks to become a more active project developer and a resource mobilizer in order to raise financing from other multilateral development banks, official bilateral agencies and private financial institutions for bankable PPP projects.

### Better Planning and Project Preparation

ADB assesses project fundamentals to assure that the principles of value and affordability are achieved throughout the structuring process.

## Asia Pacific Project Preparation Facility (AP3F)

The \$73 million Asia Pacific Project Preparation Facility (AP3F) is a multidonor trust fund aiming to increase the level of infrastructure development and enhance the quality of infrastructure in Asia and the Pacific. AP3F is managed by OPPP, and funded by the governments of Japan, Canada, Australia, and ADB. The facility commenced operations in January 2016. AP3F will help developing members to prepare a pipeline of "ready-to-finance" infrastructure projects by assisting with due diligence and helping to address impediments to investment decisions, supporting project design and assisting with project preparation, structuring, and tendering. Target sectors include energy, transport, urban development, and social infrastructure.

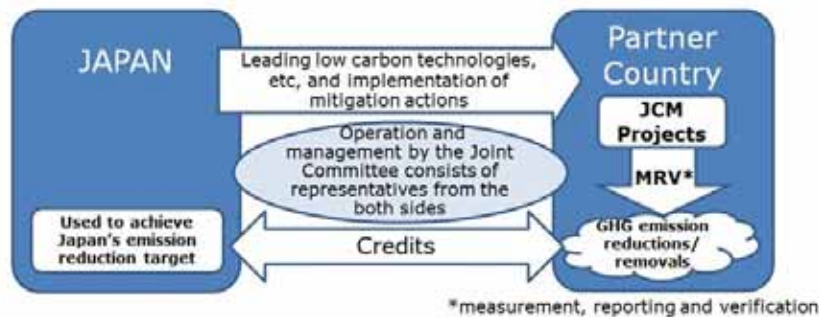


# JCM scheme

## Basic concept of the JCM

In order to effectively address climate change mitigation issue, it is necessary to achieve low-carbon growth all around the world by mobilising technology, market, and finance adequately. Recognising this necessity, the government of Japan has proposed the Joint Crediting Mechanism (JCM) as a means to facilitate the diffusion of leading low-carbon technologies, systems, and so forth in developing countries.

- Facilitating diffusion of leading low carbon technologies, products, systems, services and infrastructure as well as implementation of mitigation actions, and contributing to sustainable development of developing countries;
- Appropriately evaluating contributions from Japan to GHG emission reductions or removals in a quantitative manner, and use them to achieve Japan's emission reduction target;
- Contributing to the ultimate objective of the UNFCCC by facilitating global actions for GHG emission reductions or removals.



December, 2017  
Copyright © 2017 Mizuho Information & Research Institute, Inc.

出所: MOEJ

MIZUHO

## JCM Model Projects

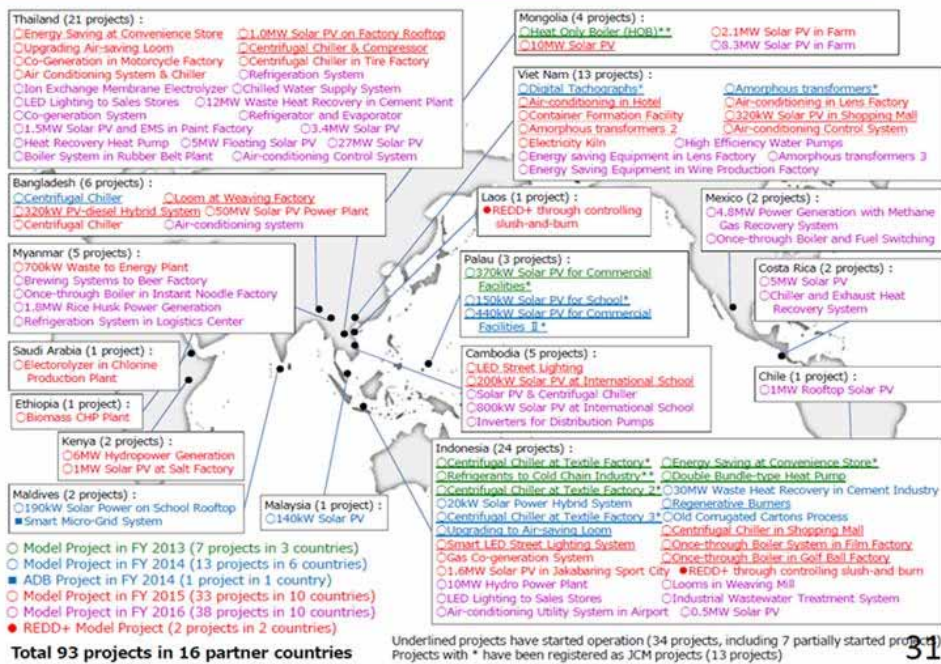
- This scheme was launched in 2013.
- The scope of the financing includes facilities, equipment, and vehicles which reduce CO<sub>2</sub> from fossil fuel combustion as well as construction cost for installing those facilities.
- Through the programme, MOEJ financially supports part of the initial cost (up to half), on the premise of seeking to deliver at least half of the issued JCM credits to the government of Japan.
- The budget for projects starting from FY 2016 is 6.7 billion JPY (approx. USD 56 million) in total by FY2018.



December, 2017  
Copyright © 2017 Mizuho Information & Research Institute, Inc.

MIZUHO

## JCM Model Projects in Asia



December, 2017  
Copyright © 2017 Mizuho Information & Research Institute, Inc.

MIZUHO



## Japanese company brochure

### AMCON INC.

- Address : 1926 Nippa-cho, Kohoku-ku, Yokohama, Japan
- Tel & URL : +81 45-540-8580, <http://en.amcon.co.jp/>  
( Contact: Seiji Kikuchi, [seiji\\_kikuchi@amcon.co.jp](mailto:seiji_kikuchi@amcon.co.jp) )
- Main Products: **Volute Dewatering Press** for Wastewater Treatment

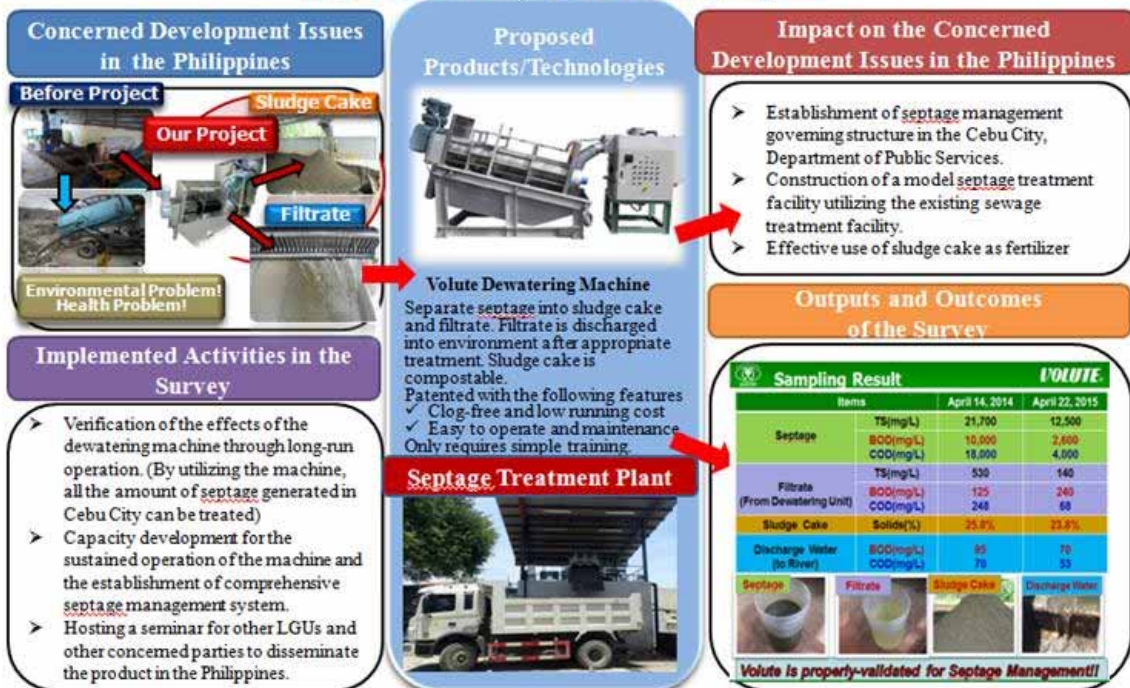


References in Philippines		City
1997 Nov	TAKATA PHILIPPINES CORPORATION	Manila
2011 Jan	PHILIPPINE SUGAR CANE PROJECT	Negros
2012 Dec	PROJECT 7	Quezon
2012 Dec	City of Cebu Pilot Test Plant	Cebu
2013 Dec	SAKAMOTO ORIENT CHEMICALS CORPORATION	Laguna
2014 Feb	City of Cebu Septage Treatment Plant	Cebu
2014 Sep	POLLUTION ABATEMENT SYSTEMS SPECIALIST	Manila
2016 Apr	Manila Bay Resort	Manila
2016 May	RIO VERDE WATER	Manila
2016 May	AQUATEKNIK	Manila
2016 Aug	Mabolo Piggery	Cebu
2016 Oct	Rohm & Haas Philippines, Inc. - Las Pinas Plant	Las Pinas
2016 Oct	TAIYO YUDEN (PHILIPPINES), INC.	Lapaz-Lapu
2016 Dec	Baguio City Sewage Treatment Plant	Baguio

#### Our References in City of Cebu

### Septage Treatment Plant Project in Cebu City

AMCON INC., Yokohama, Japan



## Japanese company brochure

Contributing to a sustainable, recycling-oriented society through water treatment

### HINODE SANGYO CO., LTD Water Recycling Company

Since 1976, we have addressed environmental issues through water treatment. In the context of the preservation of limited water resources, the role of advanced water-treatment technology has gained importance. With regard to effluent treatment, we expect a growing demand for our Elbic agents, which include microorganism-based agents, in environmental-cleanup procedures, and many of our experiments and our technical expertise are directed towards developing and refining these agents. We also provide technology and services that are suited to customer requirements, including design and construction of effluent-treatment facilities for various types of effluents, after-sales services, and analysis.



#### Elbic Series

HMB

ヒノデマイクロバブラー



- Enhancing water-treatment capacity with microbubbles  
Hinode Micro Bubbler
- production and sales of agents for effluent treatment  
ELBIC SERIES
- Planning design and construction of effluent-treatment facilities
- Maintenance of effluent-treatment facilities
- Water-quality analysis, microorganism analysis
- NEW Innovation Hydrocarbon decomposing microbe  
PR4 microbe & Dispersible microbial Process



# Japanese company brochure



## Yokohama Resources and Waste Recycling Public Corporation

(公益財団法人横浜市資源循環公社)

### ■ Overview of the Public Corporation

**Name :** Yokohama Resources and Waste Recycling Public Corporation

**Address :** Clean center bldg 6F 1-1-36, Sakuragi-cho, Naka-ku, Yokohama City, Kanagawa Pref., JAPAN

**Objective :** Through performing projects about reduction, reuse, recycling, and appropriate disposal of waste and global warming countermeasures, we aim to preserve the living environment of the citizens and improve public health, while contributing to the formation of the sustainable recycling-based society with little environmental impact and the low carbon society.

**Date of Establishment :** October 1, 1980

**Founder :** Yokohama City

**Let's try **3R** for establishing  
the recycling-based society !**

The keyword is

**“ Mottainai ”**

**Reduce :** reduce waste  
**Reuse :** use repeatedly  
**Recycle :** recycle

## ■ Major projects

### ■ The promotion project for recycling cans, bottles, and PET bottles

We carry out sorted collection of cans, bottles and PET bottles in Yokohama City. At the recycling center, we sort into cans (steel cans and aluminum cans), bottles (colorless, brown, and others) and PET bottles, and treat them for reusing as resources, while we make efforts to improve quality and conduct various studies and activities to raise public awareness for further recycling promotion of cans, bottles and PET bottles etc.



Recycling Center



Sorting work



Sorted recyclable garbage



Quality review meeting



Check for recyclable garbage

### ■ The promotion project for the final disposal and appropriate disposal of waste

We appropriately manage the final waste disposal sites in Yokohama City (Minami Honmoku final disposal site, Shinmeidai disposal site), and perform the related tasks in an integrated manner.




Minami Honmoku final disposal site

Shinmeidai disposal site

### ■ Technical guidance service

We offer technical advice and support by sending off the technical personnel to the local authorities who intend to build waste treatment facilities such as waste incineration facilities and recycling facilities.



Inspection at facilities

### Other projects

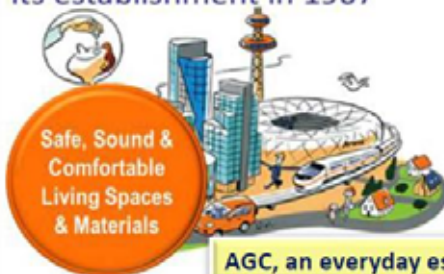
- Promotion project for 3R and global warming countermeasures
- Promotion project for appropriate disposal of oversized garbage, recycling and reuse
- Promotion project for efficient collection of waste and appropriate disposal of waste
- Service of monitoring and inspecting the soil generated by construction

# Japanese company brochure

## AGC (Asahi Glass) Business Domains & Market Segments



3 Business Domains are categorized into 10 market segments. AGC develop products by bringing together the technologies that AGC has cultivated since its establishment in 1907



AGC, an everyday essential part of our world

## AGC Solutions for Sustainable Building & Construction

**Eco Glass**

The products with various functions such as thermal insulation, energy saving, disaster prevention, and sound insulation.

**Lightweight solar cell module (Leoflex)**

AGC has considerably reduced the weight of solar cell modules, which enhances flexibility in the installation sites and sizes of the solar cells.

**GIPV (Glass Integrated PV) (SUNJOLE)**

Solar cell module for receiving sunlight on its single or both surfaces. It can be also used not only a PV cell module, also a fence and a sound barrier.

**Light weight Mounting System for Solar Module (Plalloy™)**

AGC's original FRP Plalloy is used as the light weight, highly durable frame of a solar module. Its specific gravity is 72% of that of aluminum, and 24% of that of iron.

**High durable Fluoropolymer Film**

ETFE is a thermo plastic fluororesine. While maintaining chemical resistance, electrical / mechanical characteristics and high moldability. ETFE is a firm material that is lightweight and has high design-flexibility and light transmittance.

**Glass ceramic substrates for LEDs (GCHP™)**

AGC's LED substrates are a newly developed substrate combining glass technology and ceramic technology. It has high luminance and durability.

**Fluoropolymer for Coatings (Lumiflon)**

This material protects buildings and bridges without fading for a long time. Repainting is unnecessary for more than 30 years. This material is used for a landmark construction all over the world.

**Thermal Simulation**

AGC can offer solutions with our own thermo simulation technology for living spaces.

**Polyurethane Raw Materials for Insulation (Polyether Polyol: PPG)**

PPGs are used for various insulation products as a raw materials. It contribute for high insulation and light weight.

**Fastest & Flexible Plastic FONTEX® Optical Fiber**

Fontex is developed by fluorinated chemistry. Fontex combines low power consumption of 1/20 that of copper cable and high-speed transmission of 10 Gbps or more. It is the fastest communication cable.

**Polycarbonate Sheet and Films (CARBOGLASS™)**

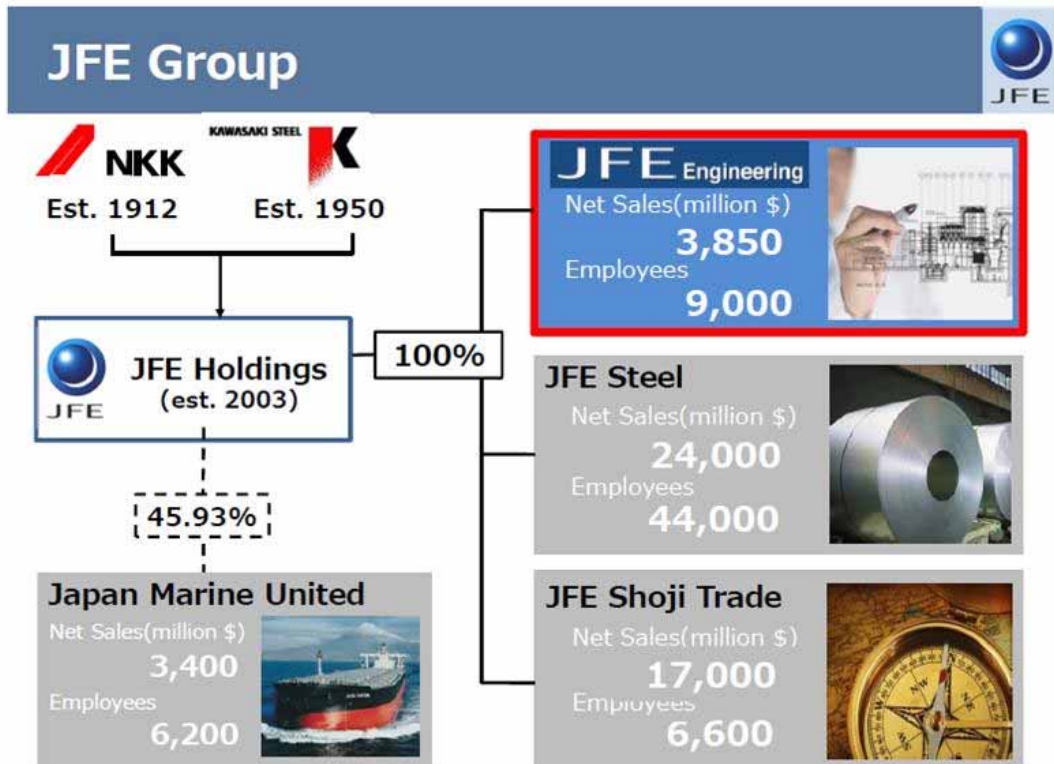
AGC's polycarbonate is a highly shock-resistant and transparent resin.

**Heat Reflective Pavement Material**

"Heat Shielding Tough Tough®" consists of very hard pigments of alumina-zirconia eutectics combined with heat-shielding binder for application on road surface.



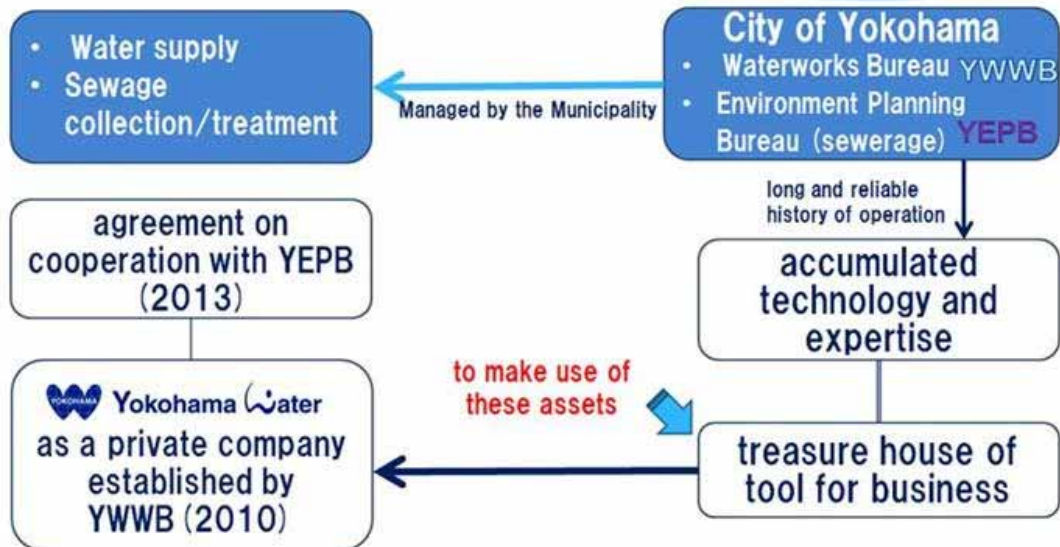
## Japanese company brochure





## Japanese company brochure

### Profile of Yokohamawater Company (YWC)



### YWC's Business

#### Abundant experience and practical know-how

##### Training for foreign participants

- Seminar on Water Service Management and Human Resource Development in Asia Region
- Training on Water Supply Operation and Management for Metropolitan Cebu Water District
- Regional Training Program – Urban Waterworks Engineering in African Region, etc.



##### Consultation for Engineering Projects

###### Water Supply

- Technical Assistance on Water Supply Operation and Management for Metropolitan Cebu Water District
- Special Assistance for Project sustainability for Cagayan de Oro City Water District

###### Sewerage

- Jericho Sanitation Project in Palestine
- Data Collection Survey on Septage Management for Facilitating the Environmental Development Project in the Philippines



# Japanese company brochure

## Mansei Recycle Systems Co., Ltd.



### Company Overview

- Foundation: Mar. 14, 2001
- Capital :JPY85,000,000 ≈ (USD 773,000)
- No. of Employees :  
43 in Mansei, 57 including Subsidiaries
- Head Office and Plant :  
17-3 Torihamacho Kanazawa-ku Yokohama, Japan



■ ISO Registration ISO14001 (JSAE1247)

### ■ Business Line:

- ① Fluff fuel production and sales
- ② Wooden chip production and sales
- ③ Consultation
- ④ Solar Panel Recycle/Development

Waste Plastic to Fluff Fuels Processing Capacity : 144t/day



## Mansei's project in Cebu



### Our target "Low Value Plastic"




Package Film, Snack Bags, Shopping Bags etc.  
These are still not recycled by any company

### How to collect Low Value Plastic (sample)



※We also collect from some plant or shopping mall directly

### Our New Facility

Segregation and Fluff Fuel Processing Facility	
Location: Tayud, Consolacion	
Land	Appx. 6,600m <sup>2</sup>
Building	Appx. 2,400m <sup>2</sup>
Capacity	50 ~ 75 tons per day

### Project Steps

Dec. 2012 ~ Mar. 2013 : JICA Project Conducted Feasibility Study on Establishing a Resource Recycling Enterprise based on Project Formulation Survey under 2012 Governmental Commission for Overseas Economic Cooperation, Official Development Assistance (ODA)
Jan. 2014 ~ Dec. 2015 : JICA Project Conducted a Pilot Survey for Disseminating SME's Technologies for Solid Waste Management and Resource Recycling in Cebu City
Now : Supported by Japan Ministries of Environment Our New commercial scale plastic recycling facility is under construction in Consolacion City supported by Japan Ministries of Environment as a CO2 emission reduction project, "Innovative Low Carbon Technology"